

Installation Instructions and troubleshooting for of Webcam

- Where possible, download and install the minimal drivers from the Internet.
- Or - Install the Microsoft Lifecam software provided on the CD-ROM. This will ensure the proper installation of the components for Advantage software.
- After installing the drivers, connect the Webcam to a USB port on your computer.
- Windows will automatically detect the camera.
- Test the Webcam using Microsoft's provided software OR Windows Imaging program under Start/ Programs/Accessories/Imaging OR Windows XP Scanner and Camera Wizard, to make sure the Web Cam is working.

To create a handshake between Webcam and Compulink software:

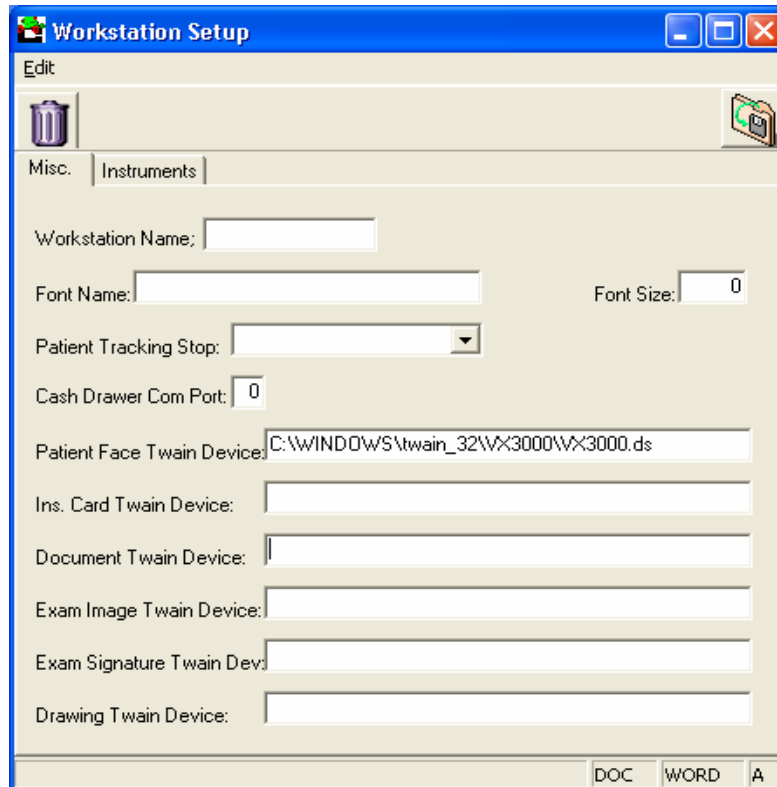
- Search for any file name with extension of **.ds** (Data Source) in the windows search utility. (use ***.ds** for the file name in the search window) The path for the "device Specific" file should usually show as one of the following:

WARNING: THE PATH IS CASE SENSITIVE!
Please enter exactly as it reflects in your system.

For Win 9X or XP: C:\Windows\twain_32\ VX3000\VX3000.ds

For Win 2K or XP upgrades: C:\Winnt\twain_32\VX3000\VX3000.ds

- Enter the path EXACTLY to the workstation setup field: (Patient Face Twain Device) in the utility menu (see below). Click Edit to access field.



- **To take a picture within the Compulink program.**
- Open the patient demographics screen then click on **Edit**, then **Picture**.