



Compulink

IMAGE ADVANTAGE SOFTWARE

Thank you for purchasing Image Advantage by Compulink.

Image Advantage from Compulink provides a direct interface into your Advantage Software Patient Record.

LIVE VIDEO CAPTURE - Images may be captured from multiple equipment sources with compatible video output, then stored in sequence directly into your patient record. With a few mouse clicks, images are captured and frozen to your monitor. Eliminates delays caused with slide development and wasted film costs on poor images. Save only images of your choosing which are instantly available for viewing from all workstations across your network.

IMPORT / EXPORT - In addition to direct live capture features, images may be imported or exported across your network, modem, or from a floppy disk.

Supports the following file types:

.JPG .TIF .PCX .BMP .GIF .TGA .PNG

SCAN - Scan in new or existing patient images, or images received from a third party

EQUIPMENT MANUFACTURERS - Compulink works in partnership with the following Equipment Manufacturers: Humphrey Instruments, Cannon, Tomey, Topcon, Nikon, Marco, and Reichert

GENERAL FEATURES - Draw and Edit onto Image, Zoom Features, User Defined Notes, Live Capture/Freeze, Automatic Date and Time Stamp, Print Hard Copy to Color or Video Printer, Re-size, Invert, and Rotate Images, Thumbnail Views of Four, Nine, or Sixteen Images, Import and Export or Copy and Paste from Clipboard, Type text and Create User Defined Stamp Pad for Instant Notes and Editing

SYSTEM REQUIREMENTS - *Compulink Advantage Office Management Software with Image Advantage Option installed*

32bit Operating System: Windows 2000 Professional

Pentium III Processor or greater

RAM: Minimum - 256 MB

CDRom and Floppy Drive

LIVE CAPTURE: Requires Video board for each capture station, however images can be viewed from all network workstations

(Note: Additional Image Board is required for live capture per capture station)

HARD COPY: High Resolution Color Printer or Video Printer

COMPRESSED STORAGE: Average 30K per Image or 33,000 Images per Gigabit

COMPRESSION: Color - JPEG; Black & White - TIFF

EQUIPMENT EXAMPLES FOR LIVE CAPTURE - Biomicroscope with Beam Splitter and Video Camera;

Fundus Camera (no flash) or Digital Camera; Topographer;

Note: All instruments require proper cabling from equipment Manufacturer and S-Video output

INSTALLATION:

Option A - User can self-install via telephone with Compulink support department assistance.

Option B - Ship workstation to Compulink for configuration. (Configuration and Shipping fee will apply)

Image topography is a billable procedure... Reimbursements range from \$30.00 - \$38.00 per Image. You can easily retrieve your investment in less than one year.

INSTALLATION INSTRUCTION

PLEASE NOTE: THIS BOARD AND THE INTENDED SOFTWARE IS ONLY COMPATIBLE WITH MICROSOFT WINDOWS 2000.

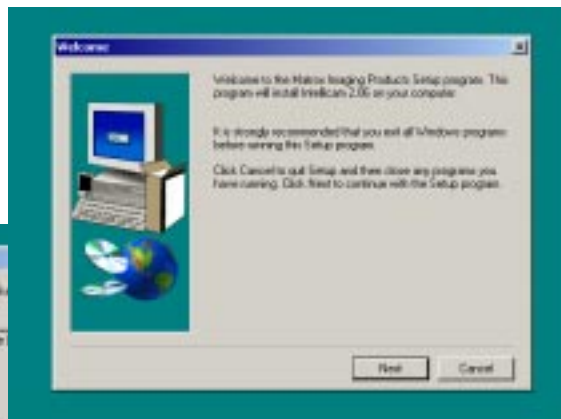
1. Install the Matrox Orion frame grabber in the AGP or PCI slot on the motherboard. (Refer to chapter 2, Hardware installation in the Matrox Imaging reference manual)

NOTE: By installing the Orion Frame grabber, most on-board and other VGA cards will be disabled. Please use the VGA output connector in the back of your PC and Orion Board to connect your monitor)

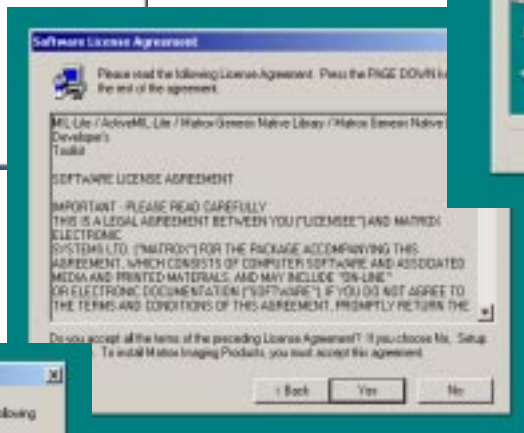
2. Install the MGA drivers and the Intellicam Software from the MIL-Lite CD included in your package. (Your computer needs to be restarted for the changes to take effect)



2a. Select next at the WELCOME screen.



2b. Accept the SOFTWARE LICENSE AGREEMENT



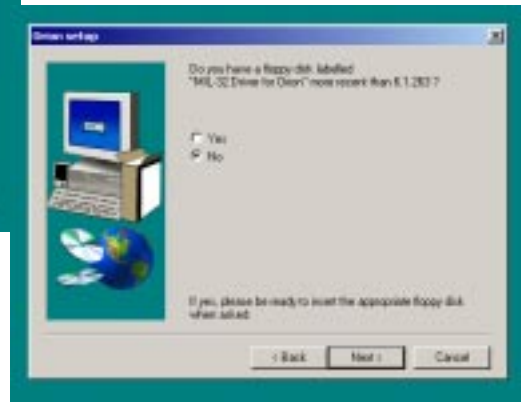
2c. Choose the destination directory

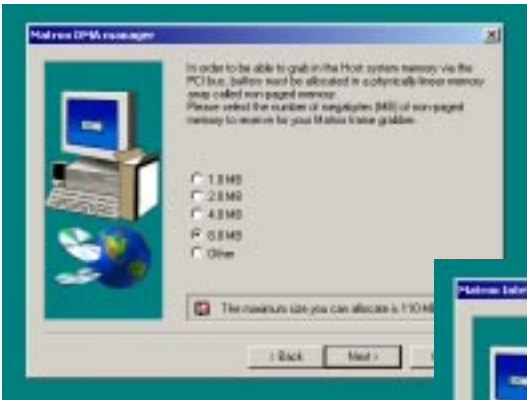


2d. Select the ORION BOARD

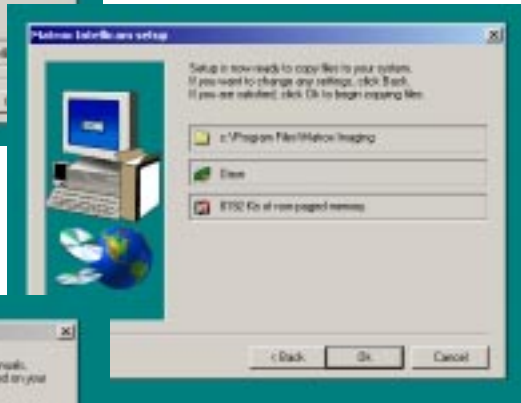


2e. Select NO for the update floppy.

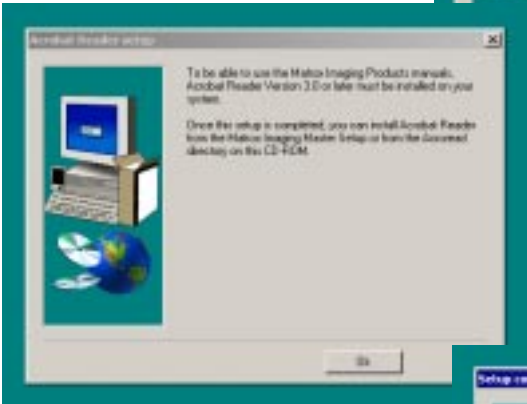




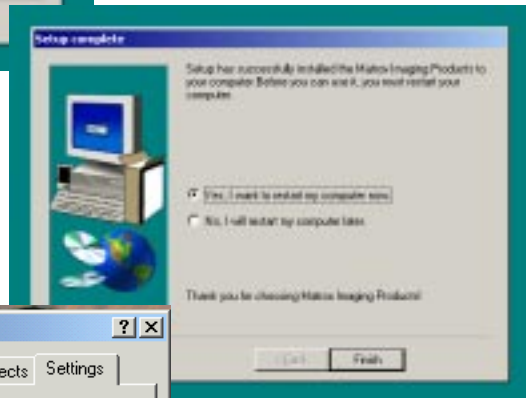
2f. Choose the amount of memory you would like to allocate to the frame grabber.



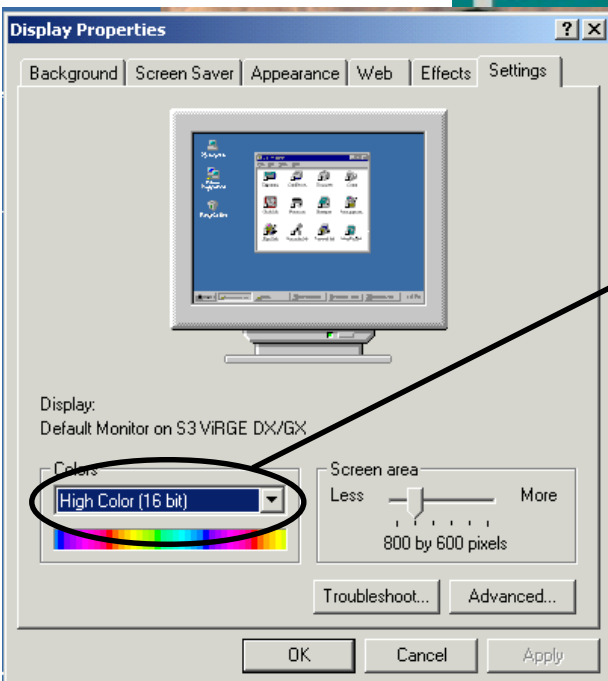
2g. All necessary files will be copied to the selected destination.



2h. Adobe Acrobat reader will be installed by default.

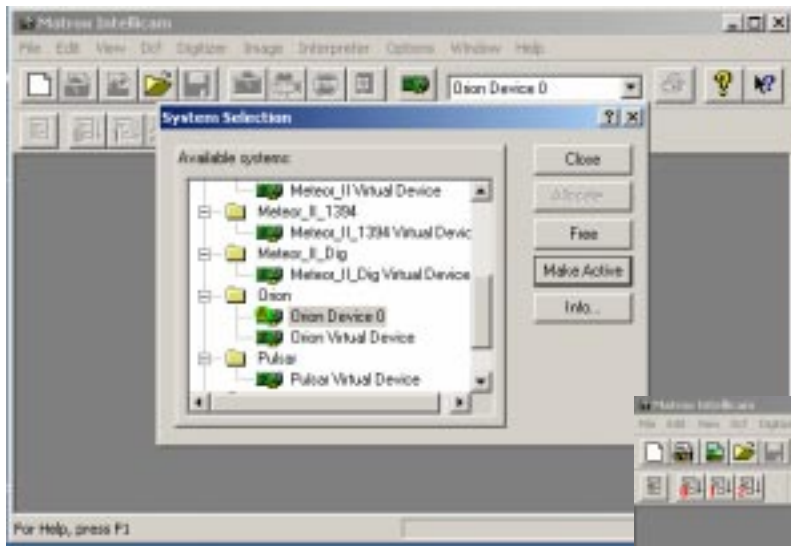


2i. You must restart the computer for the new setting to take effect.



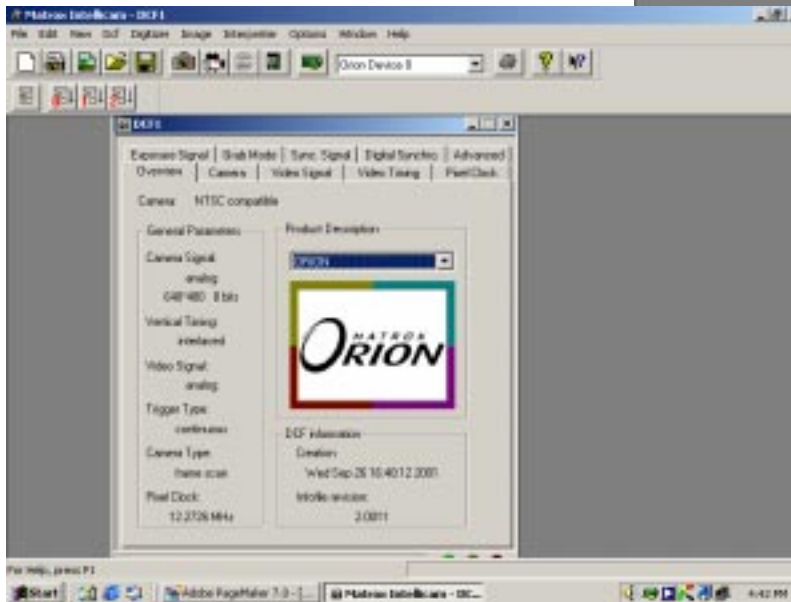
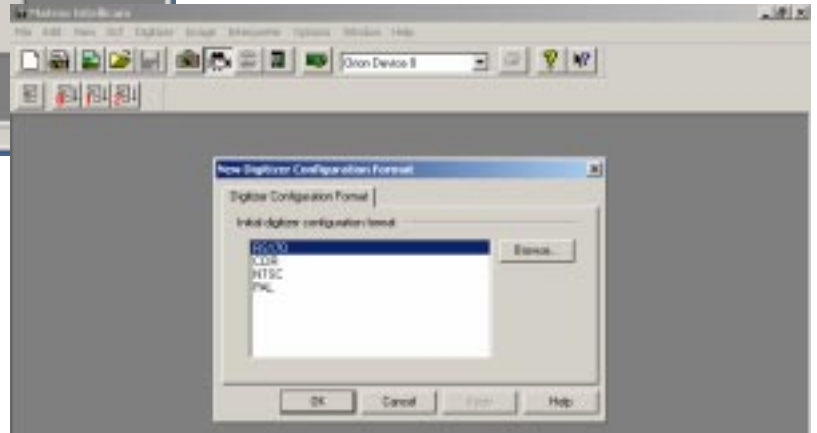
3. After restarting, make sure that your Display is set to HIGH COLOR (32bit) in Windows Display settings.

4. Attach your Camera to the Orion Board with the cables provided or any other communication cable supplied by your Camera Supplier that is compatible with the Orion Board.



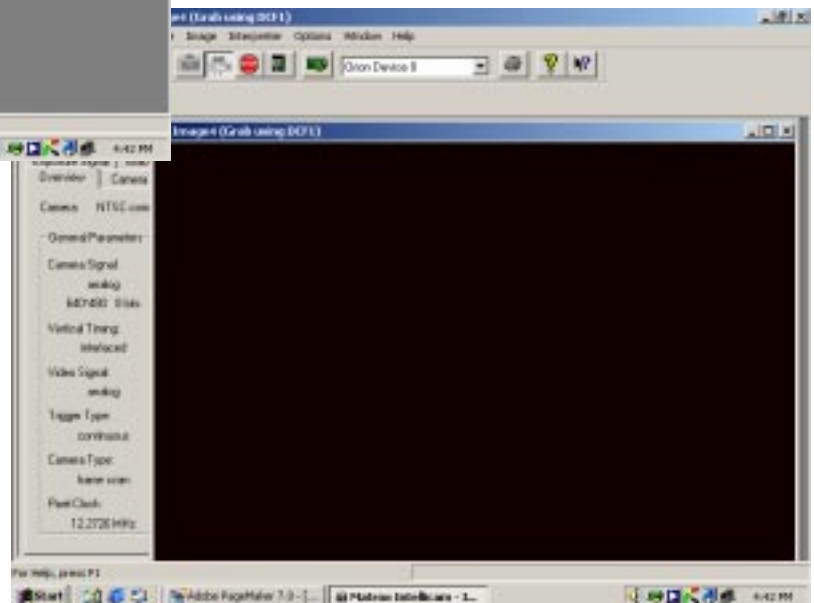
5. Run the INTELLICAM software, click on the SYSTEM SELECTION and choose the ORION DEVICE 0.

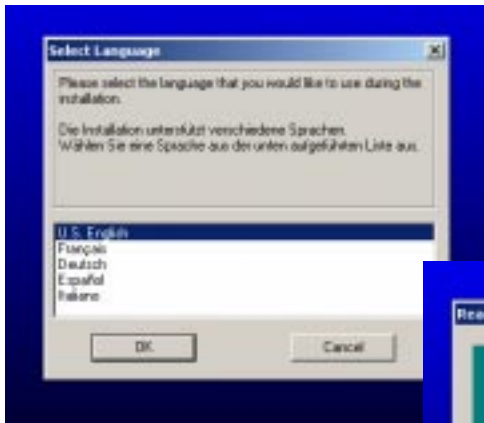
6. Click on the CONTINUOUS GRAB and in the digitizer format choose the appropriate format. (Most US cameras use NTSC)



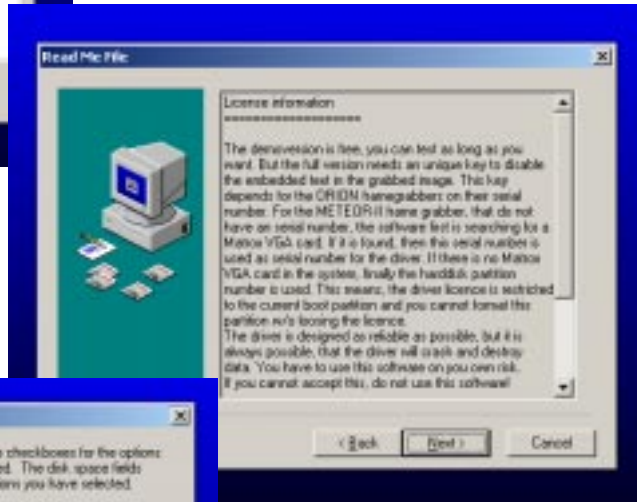
7. Verify all appropriate settings for your camera in DCF1 and save your settings.

8. You should be able to view a live feed from your camera. If you can view a live feed, you can proceed to the twain driver installation on the next page, if not, review all documentation for your camera and MIL-Lite software to troubleshoot your connections and settings. Without this connection, your Image Advantage will not function.

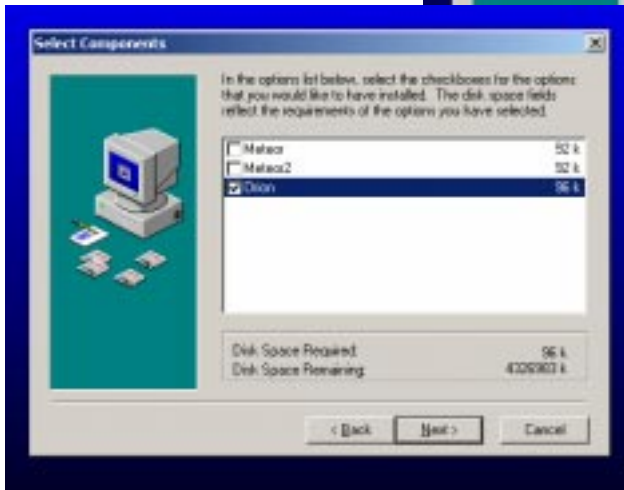




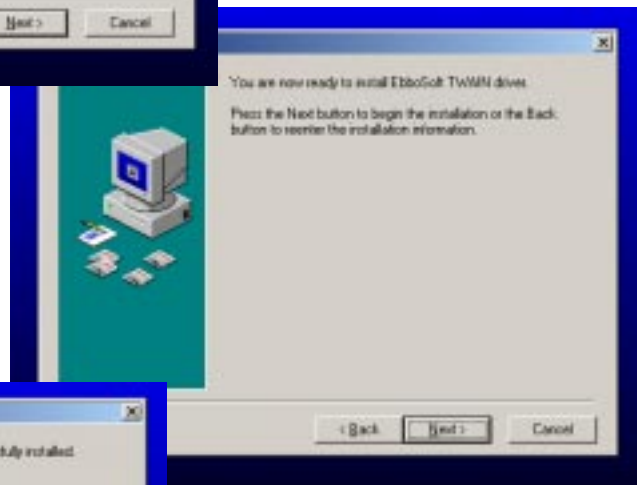
9. Install the application “TWebbo” included with your package on a floppy. (This is the twain software needed to use the Orion frame grabber as a Twain device)



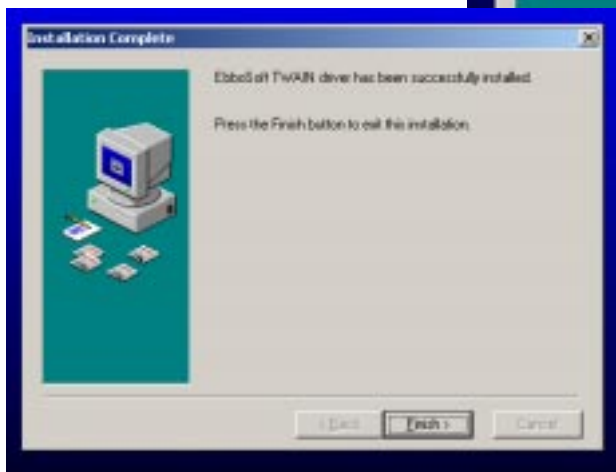
10. Read and accept the license agreement, choose next to continue



11. Choose the Orion Board as your component

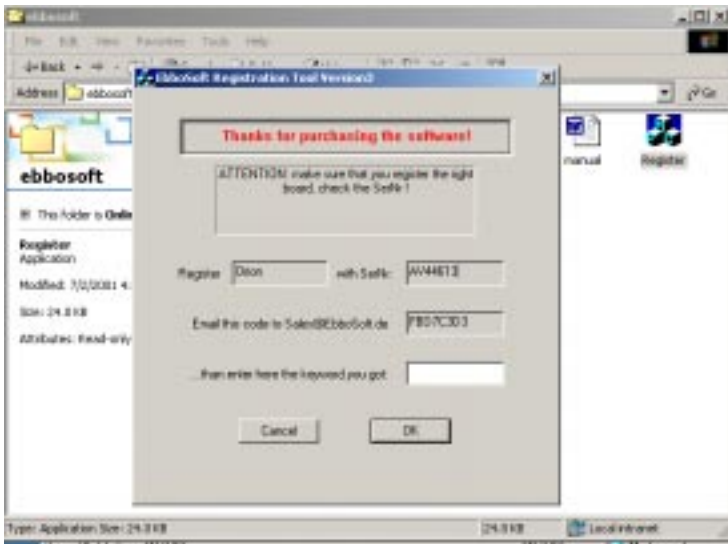


12. Install the software and choose next



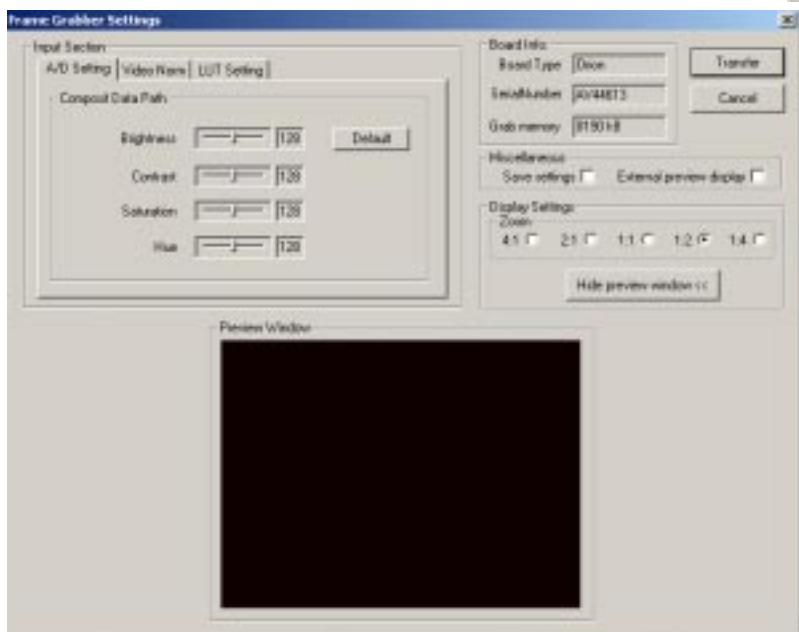
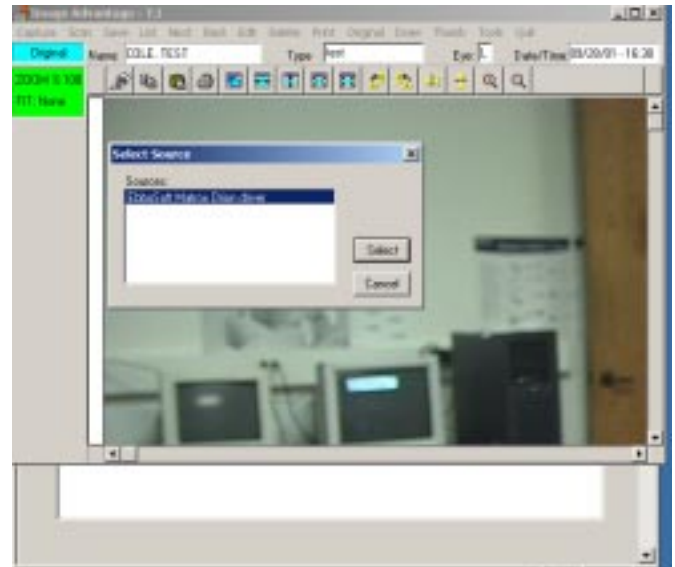
13. Click on the finish button to complete the installation.

14. Place the File “EbTWOrio.ds” dated May 14, 2001 provided on the floppy disk in the % WINNT\TWAIN_32\EBBOSOFT% folder, by default located on the C drive, i.e. C:\WINNT\TWAIN_32\EBBOSOFT (If this file already exists, please rename it with a different extension such as EbTWOrio.old)



15. Run the “REGISTER.EXE” application in the “EBBOSOFT” folder and enter the Keyword and number provided to you by Compulink to remove the demo banner.

16. To run the IMAGE ADVANTAGE, Run the Compulink Advantage Software, go to patient --> Exam --> Images, click on the SCAN in the menu, SELECT THE SOURCE BOX appears. Select Ebbosoft Matrox Orion Driver.



17. Frame Grabber Settings box will be displayed. Set your desired preferences at first use and in the MISCELLANEOUS box check the SAVE SETTINGS box and transfer the image. If you do not save your settings, the Windows registry will not be updated and you will receive an error message “Error reading the registry, please run the TWAIN app at least once and save the setting.” Once transferred, enter an image name and save your frame. Congratulations, your image software is installed.

Thank you again for purchasing Compulink Advantage Software. Please call our support department at (800) 888-8075 with any questions.