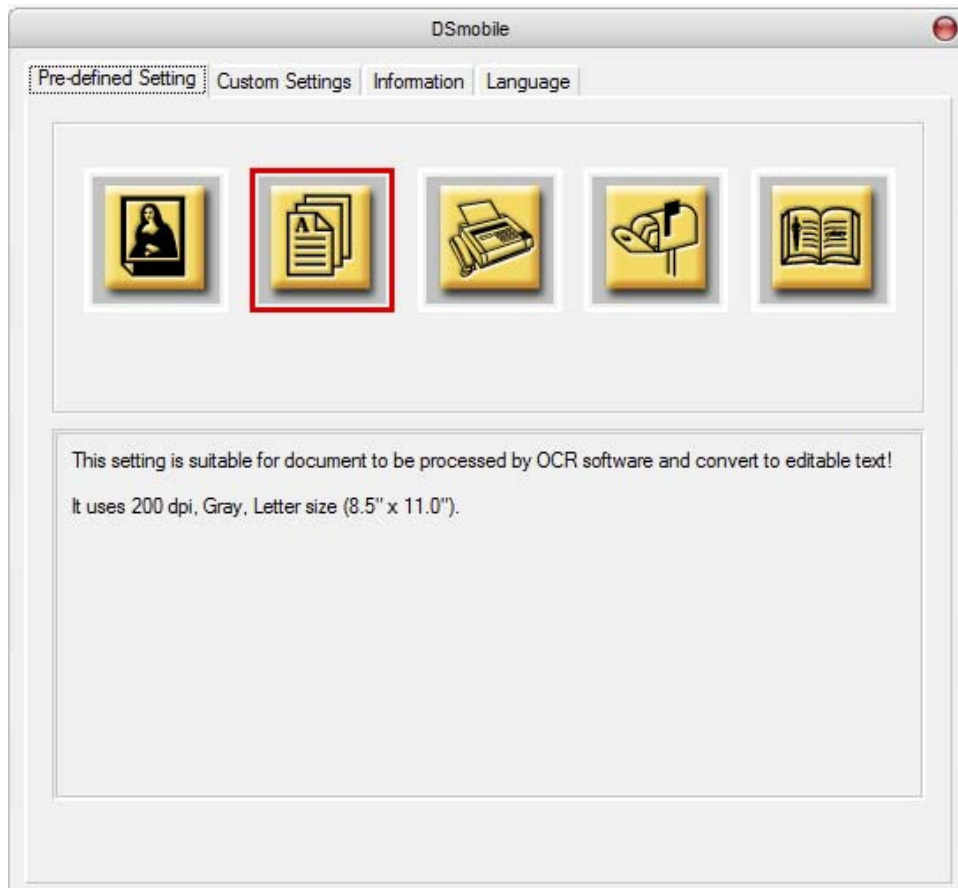


TWAIN Driver Installation Instructions for DSMobile Scanner with Compulink Advantage:

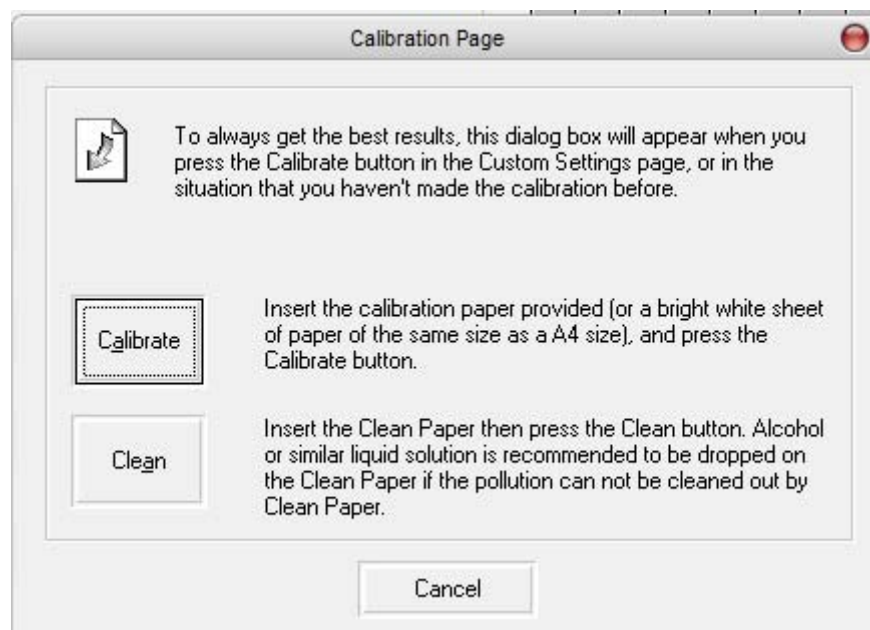
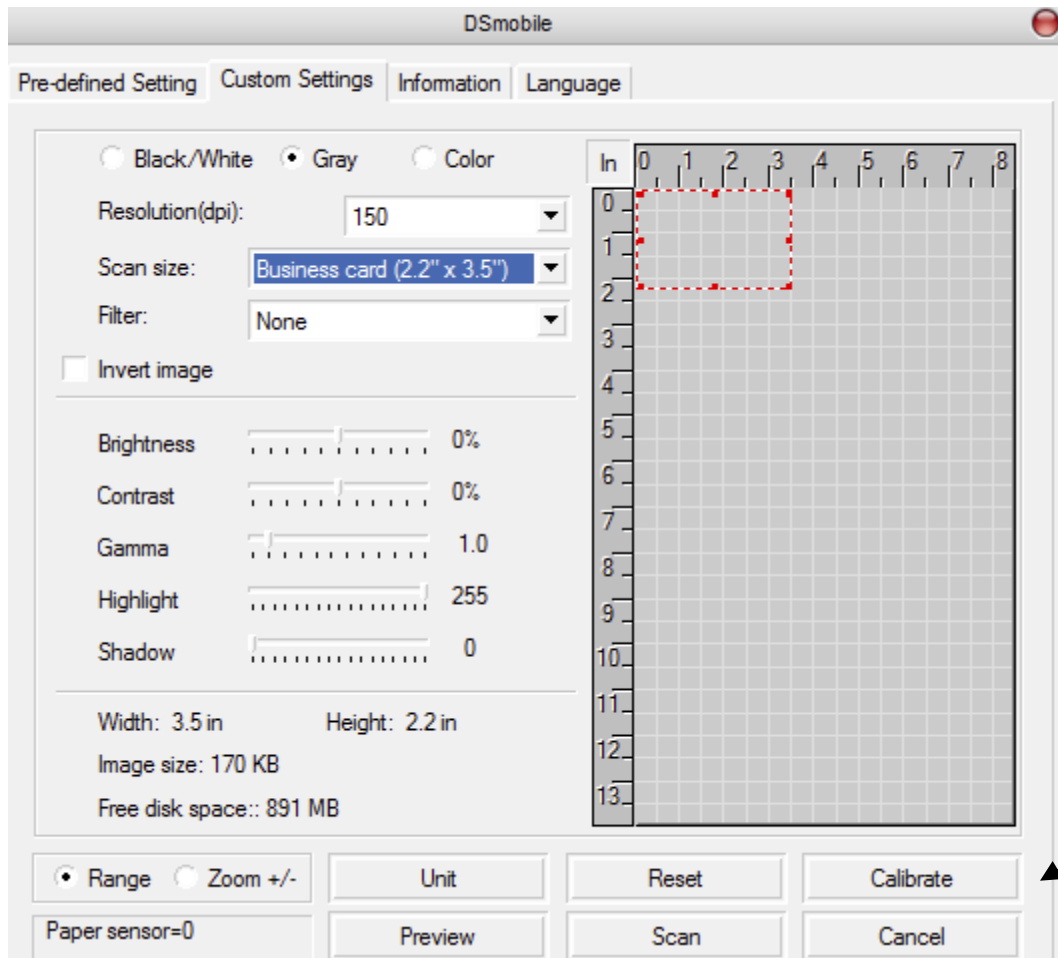
1. Download the Twain Driver.zip file by clicking on the link below or visiting the site listed.
<http://www.pentaxtech.com/Support/Software/DSmobile/twain.html>
2. Decompress (unzip) the Twain Driver. zip file into a folder called Twain Driver on any available drive. 4 files will be extracted: DSmobile.dll, DSmobile.ds, DSmobile.inf, and Nscstiu.dll.
3. Plug in the scanner in the USB port
4. **"Found New Hardware"** wizard will appear on the screen, click **Next**
5. Select **"Search for a suitable driver for my device"**, click **Next**
6. Select **"Specify a location"**, click **Next**
7. Click **Browse** and locate the file DSmobile.inf, click **OK**
8. **"Windows found a driver for this device"** window will be displayed, click **Next**
9. At **"File does not contain digital signature, do you wish to continue?"** screen click **Yes**
10. Click **Finish**. This step completes the process of the installation.
11. The scanner has to be calibrated before use to ensure the quality of the image.
12. Launch the Compulink Advantage Program, click on **Patient > Insurance > Card > Scan** or **Patient > Document > Add** to launch the DSMobile Interface.

(Note: Before you can scan an insurance card into the Insurance Card window the patient has to have an Insurance carrier where the insurance card image will be saved.)



DSMOBILE SCANNER INTERFACE

13. From the DSMobile interface window click on Custom Settings Tab, acquire the calibration paper from the original box and Insert the calibration paper in front of the scanner where the "Pentax DSMobile" name shows. Once the calibration completes the scanner is ready for scanning within the Compulink Advantage program.



To create a handshake between DS Mobile Scanner and Compulink software:

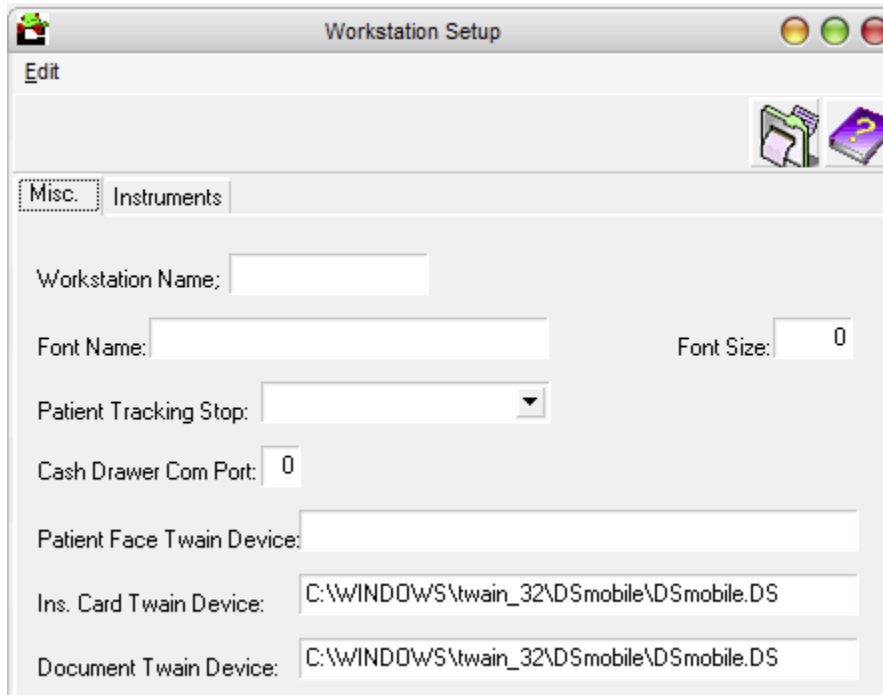
Search for any file name with extension of **.ds** in the windows search utility (Use **“*.ds”** without the quotation marks) in the search window. **Do not use the windows default wiatwain.ds file.** The path for the “device Specific” file should usually show as one of the following:

WARNING: THE PATH IS CASE SENSITIVE!

Please enter exactly as it reflects in your system.

For Win 9X or XP: C:\WINDOWS\twain_32\DSmobile\DSmobile.DS

For Win 2K or XP upgrades: C:\WINNT\twain_32\DSmobile\DSmobile.DS



TO SCAN AN INS CARD AND DOCUMENT WITHIN THE COMPULINK PROGRAM.

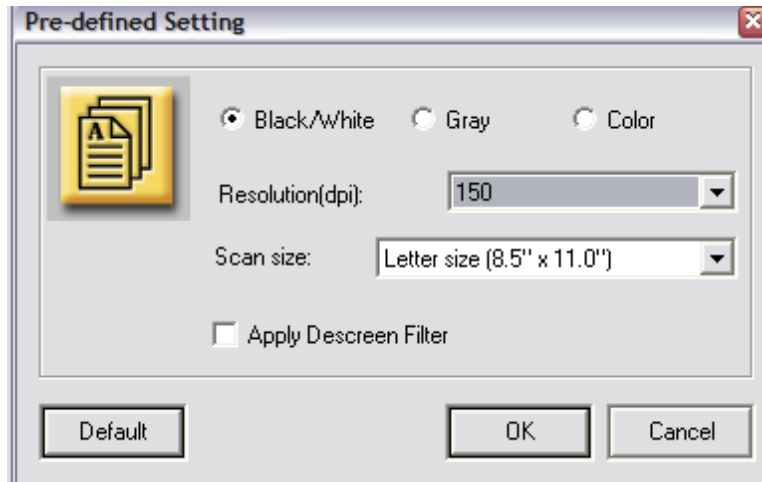
- For Insurance cards, open the patient demographics screen then click on **Insurance** (please be sure and select an insurance company or add one if not present), under the insurance screen menu click on **Card** then click on scan this will launch the DS Mobile Scanner Interface. Click on the Custom Settings Tab, depending on the paper type and the thickness of the card Compulink recommends 100 - 200 dpi, grayscale and business card (2.2" X 3.5") size settings. Click Scan on the interface to finish scanning. Modify the settings and repeat the procedure if necessary.

See Sample Image on the 1st Page.

- For Document Advantage, open the patient demographics screen then click on **Document**. The document advantage window launches, click on the select button to select DS Mobile Twain Interface and click **Add** on the menu bar to open DS Mobile Settings Interface. Compulink recommends using the Black and White with 150 DPI resolution on an 8 1/2" X 11" paper size.

NOTE: The default configuration recommended by Compulink is not a fixed setting. Different card or paper types may require changes to this configuration. Depending on the user, trial and error may be required to get the best possible resolution and image.

The following images are Compulink recommended settings: Right click on the icon to launch Pre-defined Settings for both Insurance Card and Document.



Document Recommended Settings



Insurance Card Recommended Settings

TROUBLESHOOTING:

- Make sure the card is inserted in the scanner properly and all the way. Card not scanned properly or missed scans causes most errors and lock ups. If pressing the scan button will not respond or after an access violation, **you must exit the Advantage software completely and launch it again.**
- The path to the insurance card reader under the workstation setup is case sensitive. You can try to copy and paste the path from the windows explorer address bar when available.
- Certain plastic cards will scan solid black only. Try setting the image to grayscale for these types of cards.
- Error " Your login access privileges do not allow you to update card". This could happen when you try to scan a card without an insurance company selected. **An Insurance carrier must exist and selected before scanning a card.**
- If a card is too thin, you must use the plastic jackets provided or the scanner will not pull the paper in.
- Windows should automatically detect the DSMobile Scanner. If new device found is not recognized as a scanner (for example: Unknown Device found), the scanner may be defective.
- If you are installing two twain devices on one computer, be sure to only load the latest device drivers downloaded from the Internet. **DO NOT INSTALL ANY ADDITIONAL SOFTWARE ON THE CD-ROM PROVIDED BY THE MANUFACTURER.**
- User must have write access permission to the %system% directory (WINNT or WINDOWS) directory when installing and using the scanner and for Remote scanning.
- Error 5017: Data was too long for the destination and was truncated Memo field overflow. Large file transfer causes this error. Compulink recommends using 200DPI, grayscale 8bit with the auto scan feature checked. Only select higher resolutions when the absolutely necessary.

For more information regarding setting up Twain Device on a Wide Area Network please refer to our support website at: <http://www.compulink-support.com> or Call Technical Support at 1-800-888-8075.